

EVERFI®
from Blackbaud

EVERFI & MCTA: Champion Real- World Skills in the Classroom

March 15, 2024



INTRODUCTION



Erin Dlott

District Success Lead

Areas I can support in:

- Professional Development
- Data Review
- SSO Integrations
- Alignment Guides
- Events & Scholarships
- & more!

edlott@everfi.com

Our Regional Team

EVERFI team members across the United States and Canada offer K-12 educators and administrators with *free* personalized support ranging from professional learning events to trainings throughout the year.

Education Services

Lead professional learning events as well as student learning opportunities

District Success

Build relationships with admin to align EVERFI to district plans and drive impact across region

K-12 Success

Provide excellent and timely customer service to our network of educators

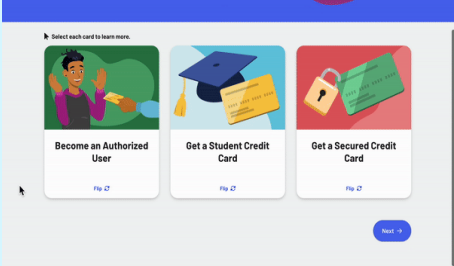


EVERFI from Blackbaud

At EVERFI, we're passionate about whole-child learning and preparing students for the real world. For the past 15 years, we've built high-quality learning resources for educators – completely *free of charge*.



Educating the Whole Child



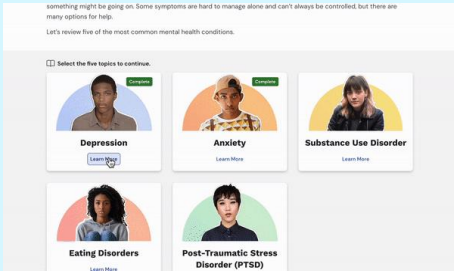
Financial Education



STEM & Career Readiness



Character Education



Health & Wellness



History



Early Academic Readiness



Benefits of EVERFI



Library of turnkey, engaging digital lessons with real-world scenarios



Accompanying activities and resources to bring the learning to life



Real-time reporting to see students' baseline knowledge and growth



Personalized ongoing support, PDs, and trainings throughout the year



Always Free for K-12 Schools



EVERFI secures national and regional strategic partners to sponsor K-12 schools in the United States and Canada. These partners fund our digital courses & resources, which are available through EVERFI's learning platform. Teachers can access this library of 40+ courses and assign them to students at no cost.

EVERFI works with hundreds of strategic partners including:



K-12 Learning Platform

EVERFI offers a free digital learning platform to K-12 educators in the United States and Canada. On your dashboard, you can:



preview the courses yourself



access planning resources



assign courses to your students



track student grades & progress



Create Your Account

Not a teacher? Create a student account [here](#).

Create your EVERFI Teacher account

Find Your School | Enter Personal Info

Country

United States of America

United States of America

Canada

United Kingdom

Other Countries

Can't find your school? [Click Here](#) [Next →](#)

OR

[Login with Clever](#)

[Login with ClassLink](#)

Already have an account? [Login](#)

[Privacy Policy](#) [Your Privacy Choices](#)

1

Enter your country

Not a teacher? Create a student account [here](#).

Create your EVERFI Teacher account

Find Your School | Enter Personal Info

Country

United States of America

State

Select Your State

School Name or Zip Code

Search by school's name or zip code

Can't find your school? [Click Here](#) [Next →](#)

OR

[Login with Clever](#)

[Login with ClassLink](#)

Already have an account? [Login](#)

[Privacy Policy](#) [Your Privacy Choices](#)

2

Find your school
by state / province

Create your EVERFI Teacher account

Find Your School | Enter Personal Info

First Name

Last Name

Select topics that interest you

Select from the list of topics we offer

Grade

Select grade(s) you teach

Enter your school email address

Enter your school email address

Create a password

Must contain at least 12 characters including a letter, a number, and a symbol (@#%*!). Cannot contain your name, user name, or the word "password."

Confirm password

Confirm password

I agree to the [terms of service](#)

[← Back](#) [Create Account](#)

Already have an account? [Login](#)

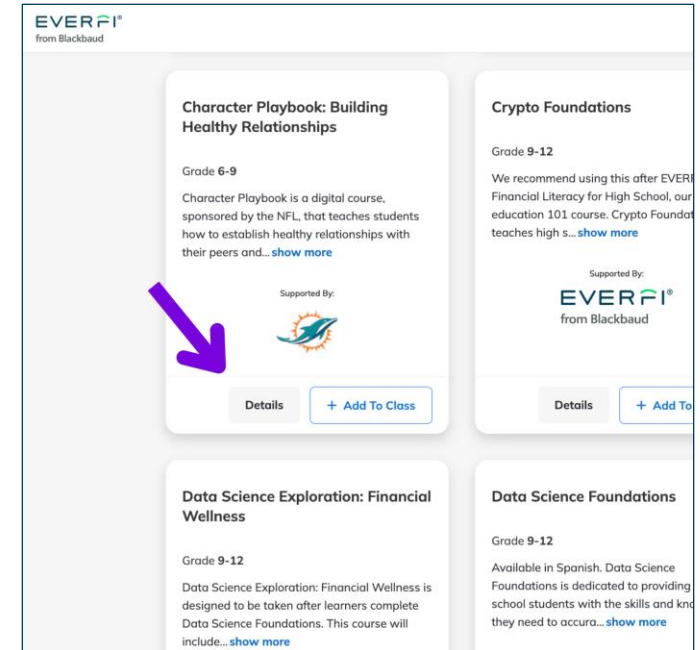
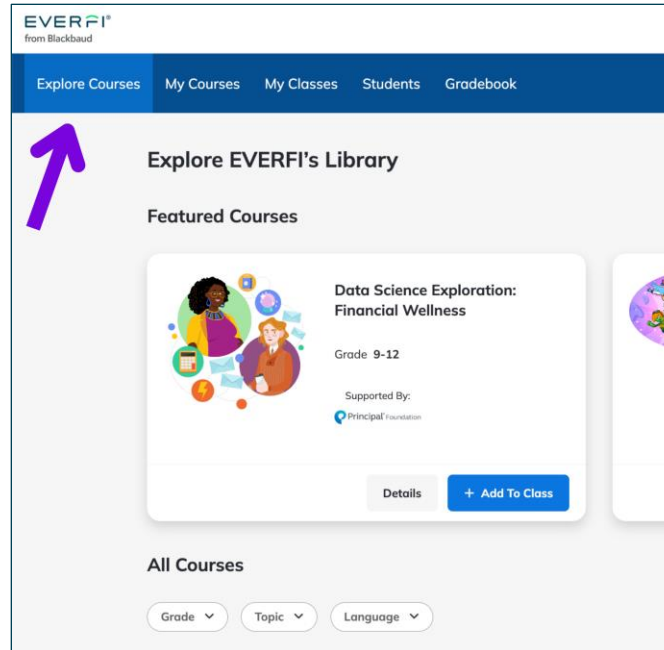
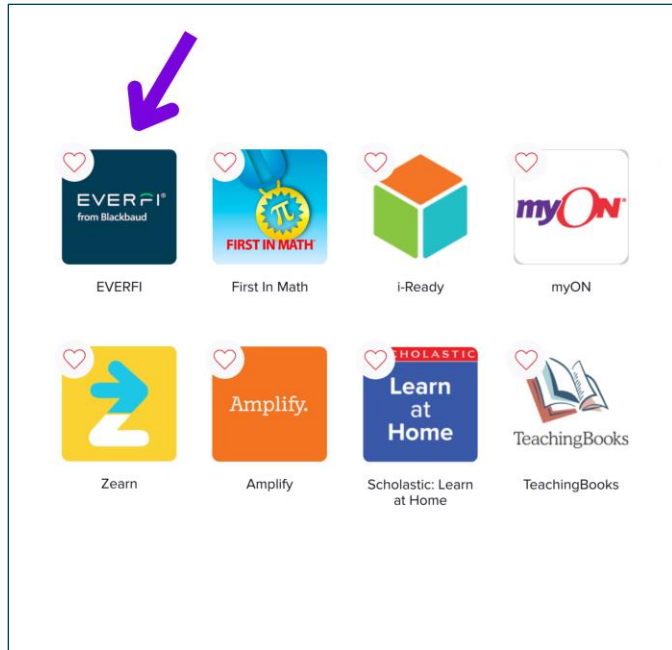
Looking to create a student account? [Click Here](#)

[Privacy Policy](#) [Your Privacy Choices](#)

3

Fill out your profile
and use school email

Getting Started with SSO



1

Select the EVERFI app on your SSO homepage or district portal

2

Hit the "Explore Courses" tab

3

Click "Details" to learn more and preview the course

Maryland + EVERFI SSO Integrations

- Allegany County Public Schools
- Anne Arundel County Public Schools
- Baltimore City Public Schools
- Baltimore County Public Schools
- Calvert County Public Schools
- Caroline County Public Schools
- Carroll County Public Schools
- Charles County Public Schools
- Frederick County Public Schools
- Howard County Public Schools
- Prince George's County Public Schools
- Queen Anne's County Public Schools
- St. Mary's County Public Schools
- Washington County School District
- Worcester County Public Schools

EVERFI in Maryland

EVERFI equips students with real-world skills through a digital platform offering more than 40+ interactive, research-based resources covering topics like financial education, health & wellness, STEM, career readiness, character education, and academic readiness.



No Cost and No Catch

Available at no cost thanks to strategic partners across the United States and Canada who share our mission.



Implementation At-Scale

With unlimited student licenses, our no-cost resources are deployable across an entire grade level.



Standards-Aligned

Our Product team uses state & national standards to build our impactful resources.



Data and Reporting

We provide a biannual report illustrating the impact of our free resources on such metrics as student learning and school usag..



Flexible Implementation

Our standards-aligned resources are designed to support flexible classroom, lesson, and student needs.



Cost-free Training and PDs

Your dedicated support team provides trainings and ongoing support throughout the school year all at no cost to you.



Preview of Your Impact Data

Unique Active Students	62,473
Sum of Student Enrollments	102,364
Curricula	43
Active Teachers	922
Active Schools	374

2023-2024 Breakdown of Learning by Topic in Maryland

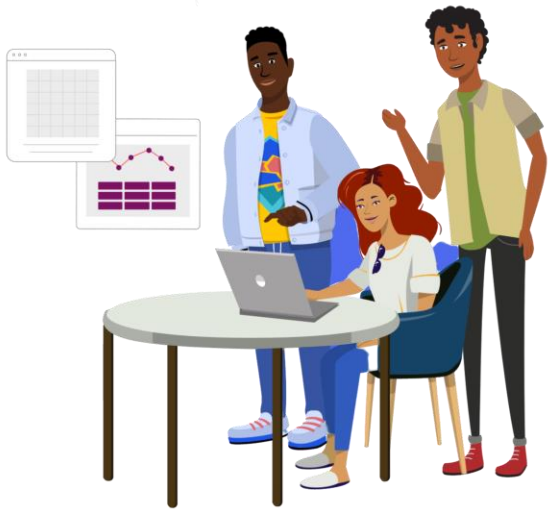
EVERFI's no-cost digital resources cover six topic areas. Here is the breakdown of your students' usage by topic area:

	Financial Education	STEM & Career Readiness	Character Education	Health & Wellness	History	Early Academic Readiness
Active Schools	281	112	123	126	20	31
Sum of Student Enrollments	51,062	10,765	15,774	22,283	1,561	919

EVERFI resources are available at no cost thanks to the generous support of partners like:



Financial Education Suite



15 digital courses

Aligned to standards including Jump\$tart National Standards for Personal Finance Education and State-Based Financial Literacy Standards

Vault
Grades 4-6

FutureSmart
Grades 6-8

SmartEconomics
Grades 6-8

SaveUp
Grades 6-8

Venture
Grades 7-10

EVERFI
Grades 9-12

Build
Grades 9-12

Grow
Grades 9-12

Minding Your Money
Grades 9-12

Money Moves
Grades 9-12

Marketplaces
Grades 9-12

Sustainable Investing Essentials
Grades 9-12

Accounting Careers
Grades 9-12

Crypto Foundations
Grades 9-12

Pathways
Grades 9-12

STEM & Career Readiness Suite



10 digital courses

Aligned to standards including CCTC (Common Career Technical Core) and International Society for Technology in Education (ISTE) Standards

**Future Goals -
Math**
Grades 4-7

**Future Goals -
Science**
Grades 4-7

**Sustainability
Foundations**
Grades 5-8

**Plants, Animals,
& Our World**
Grades 5-8

Ready to Recycle
Grades 5-8

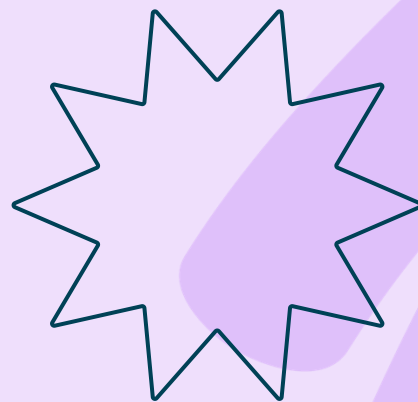
Endeavor
Grades 6-9

Keys to Your Future
Grades 8-12

**Data Science
Foundations**
Grades 9-12

**Data Science:
Financial Wellness**
Grades 9-12

**Data Science:
Banking Fraud**
Grades 9-12



EVERFI Spring Updates

Updated Financial Literacy Content

Coming July 2024

This school year, EVERFI launched a beta program where a group of educators piloted new high school financial education content with their high school students. Based on data and insights from this initiative, we are building a newly updated *EVERFI: Financial Literacy* course and tax simulations available as standalone content.

This updated content is designed to:

- Support the various needs of districts as they meet personal finance mandates, satisfy graduation requirements, etc.
- More effectively meet national and state standards
- Increase engagement for students through updated interactivity and characters within the course
- Make our products easier to use



EVERFI: Financial Literacy

11 digital lessons,
approx. 20 mins each

Topics covered:

- Smart Money Habits
- Budgeting
- Banking: Savings Accounts
- Banking: Checking Accounts
- Credit and Debt Basics
- Education ROI
- Education and Financial Aid
- Exploring Jobs and Careers
- Beginning Employment
- Consumer Skills
- Insurance Basics



Tax Simulations

5 digital simulations,
50 mins total

Topics covered:

- Filing your taxes
- Tax credits for families
- Taxes for gig workers
- Taxes for students
- Taxes for investments

High-Quality, Future-Ready Products

ISTE Seal

EVERFI recently earned the International Society for Technology in Education (ISTE) Seal. This product certification applies to EVERFI's digital learning platform and suite of K-12 courses, verifying that our products:

- ✓ are tested, proven, and aligned to the ISTE standards
- ✓ have a strong user interface and user experience based on best practices for digital-age learning
- ✓ are grounded in digital pedagogy and the learning sciences
- ✓ incorporate inclusivity and accessibility considerations for students and teachers



The library of evidence supporting EVERFI's impact on student learning and attitudes continues to grow. By utilizing EVERFI's comprehensive educator platform, educators gain access to a wealth of resources.

– **ISTE Seal Reviewers**

ESSA Evidence Badge

Every Student Succeeds Act (ESSA)

FutureSmart has been certified as meeting the rigorous criteria set forth by ESSA (Every Student Succeeds Act) federal requirements for Level III evidence. EVERFI worked with a third-party educational research company, LearnPlatform by Instructure, to review research indicating that the use of *FutureSmart* is related to improved students' financial capability outcomes. They found that the study readily fulfilled all standards related to ESSA Level III "Promising Evidence."



Scholarships & Contests

EVERFI's network of national and regional strategic partners offer K-12 students who take our digital courses with exclusive opportunities like scholarships and contests.

These partners awarded nearly **\$300K** in college savings scholarships last school year.

Learn more about what scholarships & contests are available for your students at EVERFI.com/Scholarships.



Scholarships Toolkit

This EVERFI toolkit provides an overview of the scholarship opportunities available to students who take select EVERFI courses this school year.

The toolkit provides:

- An outline of the scholarship application process for students
- Several downloadable resources like social media tiles that can be used in your district to promote these opportunities

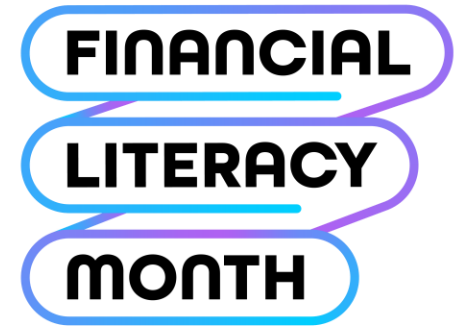
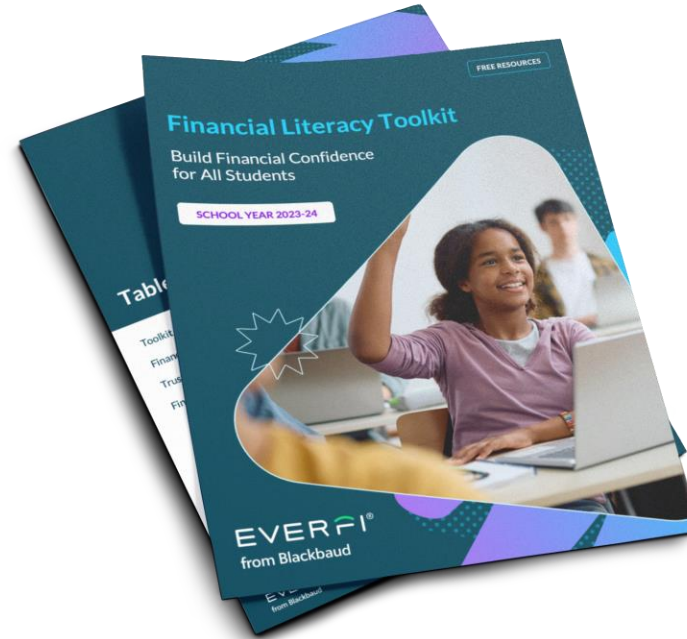


Grab this school year's toolkit by scanning the QR code

Celebrate Financial Literacy Month

National Financial Literacy Month is **celebrated in April**, which is an opportunity to support students as they develop financial confidence and healthy financial habits.

This school year's toolkit includes professional learning opportunities and a Financial Literacy Month calendar, which features free activities and resources to support your planning.



with EVERFI[®] from Blackbaud



Grab this school year's toolkit by scanning the QR code or heading to EVERFI.com/FLM

Moving Forward

1

Review

2

Plan

3

Implement

4

Grow

District

Determine course placement

Schedule training opportunities and SSO integration

Teachers utilize and provide feedback

Determine growth areas through impact review

EVERFI

Recommendations for course placement

District-wide or 1:1 trainings

Sponsor engagement opportunities

Provide impact updates to share with community

Schedule a time with me!

Email

edlott@everfi.com or
use the QR code to
schedule a time to
review:

*Mid-Year and End of Year
data

*Alignment guides

*Professional development

*Financial Literacy Month
programming

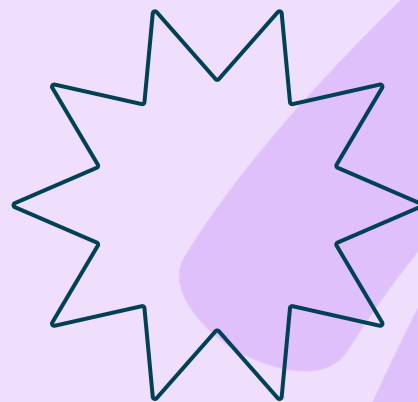
*Summer school planning



MD District Demo

Access by navigating to everfi.net and enter these credentials

- Username: mdadmin@everfi.net
- Password: fieducator1234!



Q&A

What questions do you have?